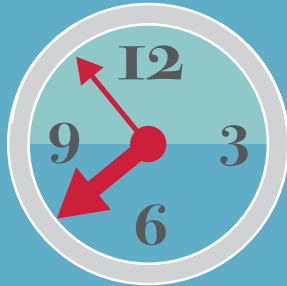


MMSD
4K Madison Metropolitan School District's
Four-year-old Kindergarten

What is it and
 who attends?

MMSD 4K **BASICS**

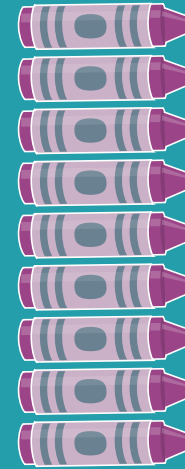


School based programs
(24 sites) and community
 based (ECE) programs
(25). (Head Start at
6 locations)

Half-day program
 AM or PM sessions



Started in 2011. 1,749
 students enrolled, **72% of**
all kindergarteners participated in 4K. (2016-2017)



MMSD
4K FACTS

STATED IN
 PERCENTAGE
 POINTS



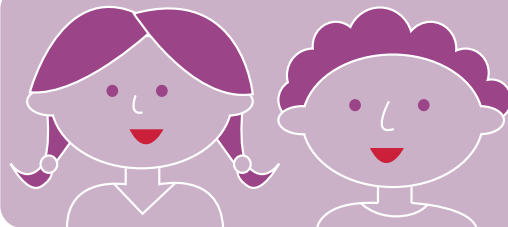
Asian
 students
5% points
less likely
 than whites
 to enroll

Students
 with a
 disability
10% points
more likely
 than those
 without to
 enroll

English
 Language
 Learners
9% points
more likely
 than non-ELL
 to enroll

African
 American
 students
5% points
more likely
 than whites
 to enroll

Free &
 Reduced
 Price Lunch
 students are
5% points
more likely
 than non-FRL
 to enroll



The most promising path to educational equity is to minimize inequalities in education before they emerge.

Four-year old kindergarten is one such promising pathway. Enrollment trends in MMSD 4K show that the program enhances access to equity by reaching students from traditionally disadvantaged groups.